



**THE LOCALS APPRECIATION CARD (LAC) IS HONORED AT THE LOCATIONS LISTED BELOW**

(Tybee businesses appreciate the year-round residents! Those with the 31328 zip code shown on their driver's license are eligible to obtain a **Locals Appreciation Card** through the Tybee Island Development Authority / Main Street Office at City Hall.

Cards are valid for one calendar year and are renewed for the next year at the beginning in December.

Check the [Development Authority / Main Street Program webpage](#) for updates about businesses honoring the LAC.)



**AGAVE BAR & GRILL**  
(402 First Street, 472-9022)  
offers to 10% off food.



**JUSTABREEZE GALLERY & FRAMING**  
(1207 E. Highway 80; 358-9200)  
offers 10% off merchandise and framing.



**COCO'S SUNSET GRILLE**  
(1A Old Highway 80; 786-7810)  
offers to 10% off food.



**KELLY & COMPANY**  
(1207 E. Highway 80; 499-4190)



**COTTAGE OF THE OCTOPUS LAIR**  
(786-9255)  
offers two nightly/weekly rental apartments.



**LATITUDE 32°**  
(1213 E. Highway 80 C; 786-9334)  
offers locals a 10% discount off your entire purchase, plus a free drink Lat32 drink koozie and sticker!



**THE DECK**  
(404 Butler Avenue; 786-4745)  
offers 10% off food.



**LIGHTHOUSE PIZZA NORTH**  
(1105 E. Highway 80; 786-9874)



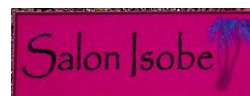
**FANNIES ON THE BEACH**  
(1613 Strand Avenue, 786-6109)



**MISTY MARSH**  
(1213 E. Highway 80; 257-8724)  
offers 10% off merchandise excluding consignment pieces



**FAT TIRE BIKE SHOP**  
(1405 Butler; 786-4013)  
offers 10% off merchandise.



**SALON ISOBE**  
(1013 E. Highway 80; 786-9626)  
offers 10% discount on all services paid in cash.



**FISH ART GALLERY**  
(1207 E. Highway 80; 713-8647)

Card must be presented prior to purchase. Participation and offers are subject to change. If an exact offer is not listed, ask merchants upon arriving.



**SEA STRANDS SALON**  
 (802 First Street, 713-9780)  
 Offers 10% off on styling services  
 when paying with cash



**TYBEE ISLAND HISTORICAL SOCIETY**  
 (30 Meddin; 786-4077)  
 offers a 10% discount on merchandise from their  
 gift store (not applicable with other discounts or  
 admission)



**SMITH TILE INSTALLATION SERVICE, LLC**  
 (656-7111)  
 offers a local discount of 10% off their  
 labor prices with the LAP Card.



**TYBEE ISLAND MARINA**  
 (4 Old Tybee Road, Hwy. 80; 786-5554)  
 offers 10% discount on all Jet Ski and boat  
 rentals; a 10% discount on all dockage rates as  
 well as dry boat storage for new customer  
 contracts. Offers may not be combined with  
 other Marina offers/specials.



**SPANKY'S BEACHSIDE**  
 (1605 Strand Ave.; 786-5520)



**STEWART'S TYBEE ISLAND BAIT AND TACKLE**  
 (4F Old Highway 80; 786-7472)  
 offers 5% off to cardholders; 10% if  
 cardholder is a charter captain.



**TYBEE ISLAND SOCIAL CLUB**  
 (1311 Butler Avenue; 472-4044)  
 offers 10% off food when you present your  
 locals appreciation card.



**STING RAY'S SEAFOOD**  
 (14<sup>th</sup> & Butler; 786-0209)



**TYBEE MARKET IGA**  
 (1111 Butler Ave.; 786-4601)  
 offers 10% off orders of \$100 or  
 more – exclusions apply.



**SWIZZLE & SHAKE**  
 (1213 E. Highway 80; 398-6775)  
 offers 10% off all new merchandise.



**WET WILLIE'S**  
 (16 Tybrisa St., Suite B; 786-5611)



**TIM'S BIKE & BEACH GEAR**  
 (1101 E. Highway 80 & 1510 Butler Avenue;  
 786-8467)  
 offers 10% off rentals, merchandise and service.



**WIND ROSE CAFE**  
 (19 Tybrisa St.; 786-6593)  
 honoring locals for over 15 years!



**TS CHU'S DEPARTMENT STORE**  
 (6 Tybrisa Street; 786-4561)

**WHY BUY LOCAL?**

- It keeps dollars in Tybee's Economy. According to the 3/50 Project, out of every \$100 spent at a locally owned business, \$68 stays in the local economy.
- Residents will also be able to have more choices. The plethora of small businesses here helps to ensure more innovation, competition and lower prices over the long term. Local businesses choosing products based on what their local customers need and desire guarantees a more diverse range of product and service choices.
- Likewise, this program embraces what makes Tybee unique. Tybee is an island where we shop, eat, entertain, and play – it is why Islanders call it home.
- Lastly, local businesses are the lifeblood of our community. When we keep our dollars in the city, every purchase contributes toward our facilities, our culture and the well-being of our friends, relatives and neighbors.



Card must be presented prior to purchase. Participation and offers are subject to change. If an exact offer is not listed, ask merchants upon arriving.